



M2K-B specification

Switching capacity (single direction)	910Gbps
Forwarding performance	410Mpps
Dimensions (H x W x D)	88.1 mm x 442 mm x 220 mm(2U)
Flash	128 MB
SDRAM	16 GB
Storage	4G NAND FLASH
Interface type	100GE/50GE/40GE/25GE/10GE/GE
Max Port density	100GE:8; 50GE:/4; 25GE: 8; 10GE: 30;
IPv4FIB	4M
IPv6 FIB	1M
ACL4	32K
ACL6	16K
Feature	Segment Routing, EVPN, VxLAN, 1588v2, FlexE/Slicing, Macsec, IPSEC, L2/L3 VPN
BNG	supported
Typical Power consumption	DC/AC: 271W/309W
Weight	DC/AC: 11KG/12.2KG
Operating temperature	DC: -20°C~65°C(-5°C start) AC: 0°C~45°C(long term), -5°C~55°C(short term)
Storage temperature	-40°C~70°C
Redundant fans	2+1
Redundant power supply	1+1, AC/DC/HVDC

NE40E-M2K-B 220mm, T Level

NE40E-M2K-B



- 2RU
- 220mm depth

- Fixed Ports: 4*100GE + 10*10GE + 10*GE
- 2 Flexible Card, 200Gbps/Slot

Large Capacity **Compact** **Programmable** **Green**

T Level CO router

- 910Gbps
- 200Gbps per slot
- 100GE/50GE/10GE/GE

2U Height, 220mm Depth

- 442mm*220mm*88.1mm*
- 300mm cabinet installation

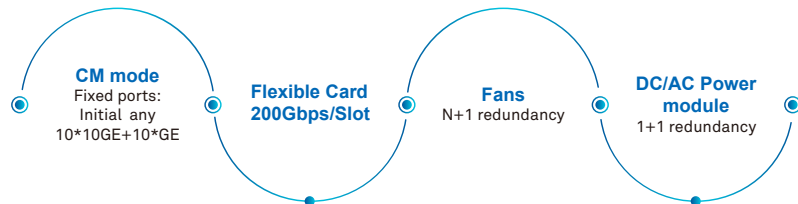
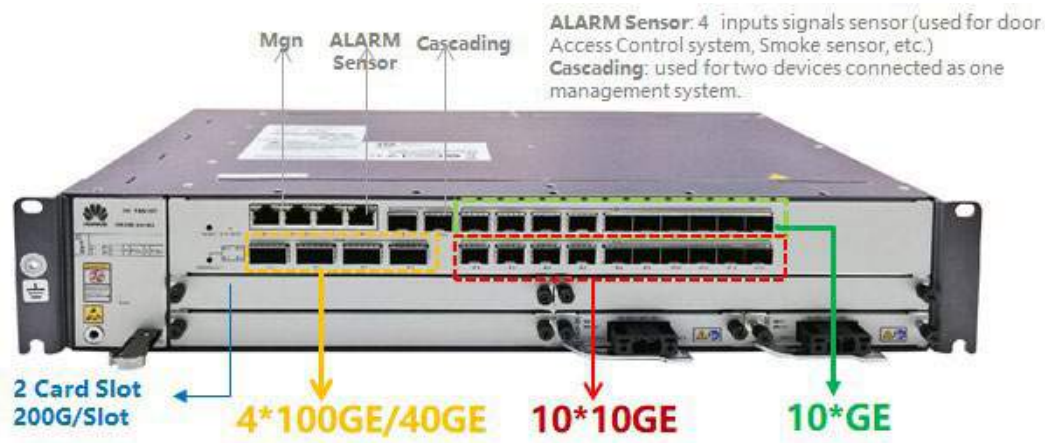
SRv6 Ready

- EVPN, Segment Routing
- Programmable NP Arch
- Support BNG, 32K session

0.4W/G

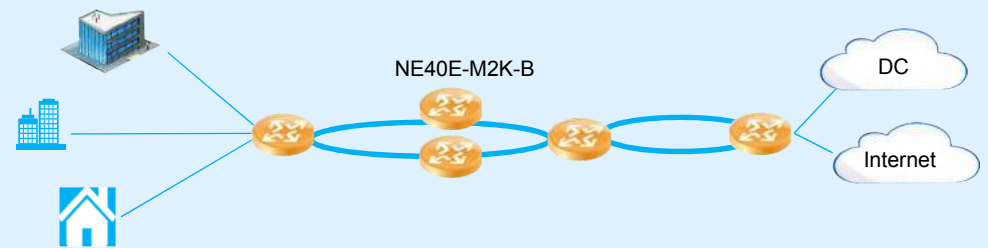
- Industry leading low power consumption design

M2K-B: Max 8*100GE (Fixed 4 * 100GE + 2 Flexible 2*100GE Cards)



NE40E-M2K-B Scenario

Unified bearer scenario



MiniBNG scenario

